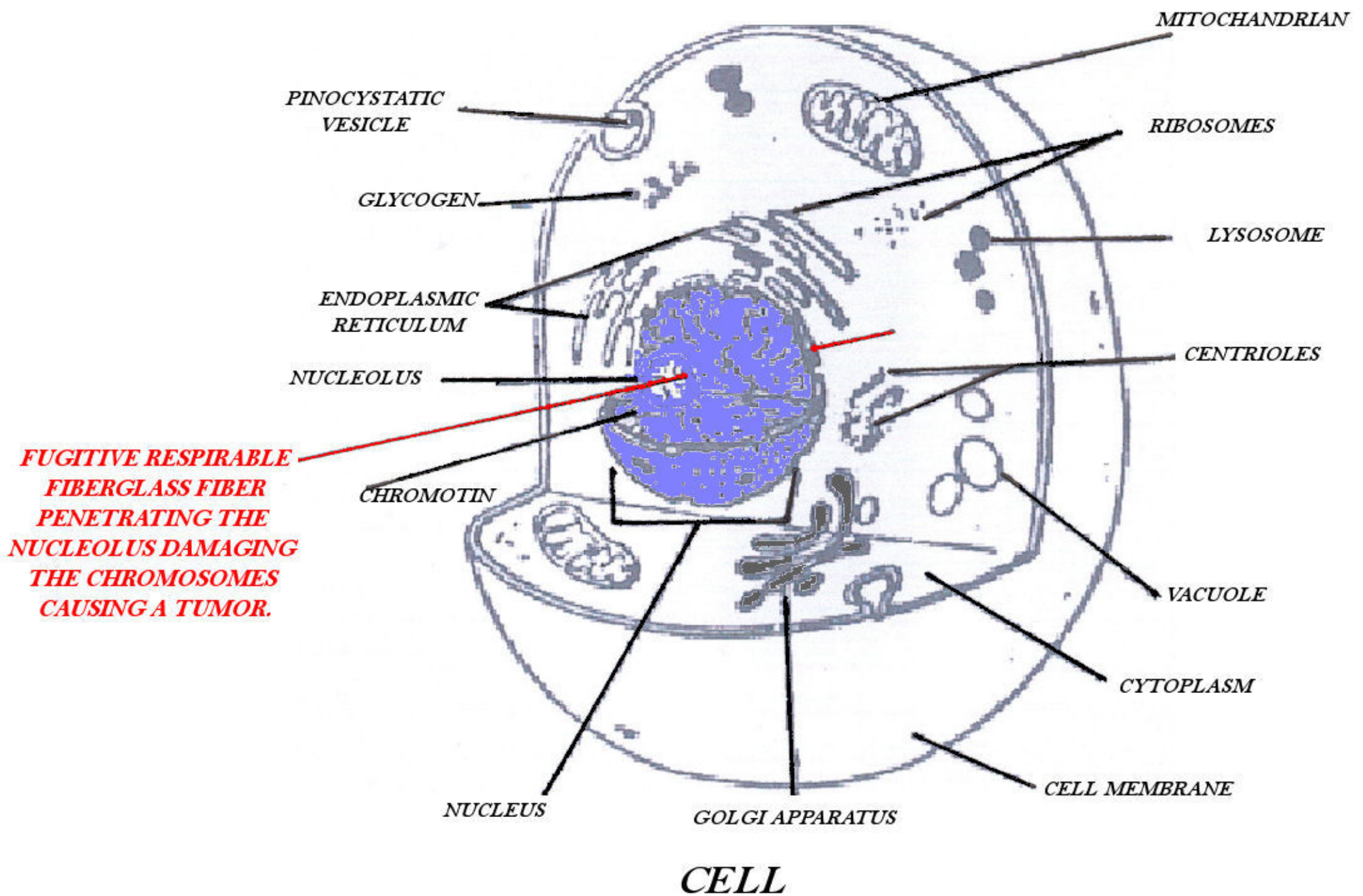


*FUGITIVE
(RDF) - RESPIRABLE DIRABLE FIBER - CARCINOPGENICITY*



How MMMF (Respirable sized Fiber Glass) Causes Cancer

FUGITIVE Man Made Mineral Fiber, I.E. Fiber Glass in Respirable form enters the blood stream through the Lung Wall.

When the fiber (silica shard) penetrates the Nucleolus it damages the Chromosomes, triggering a carcinogenic tumor response.