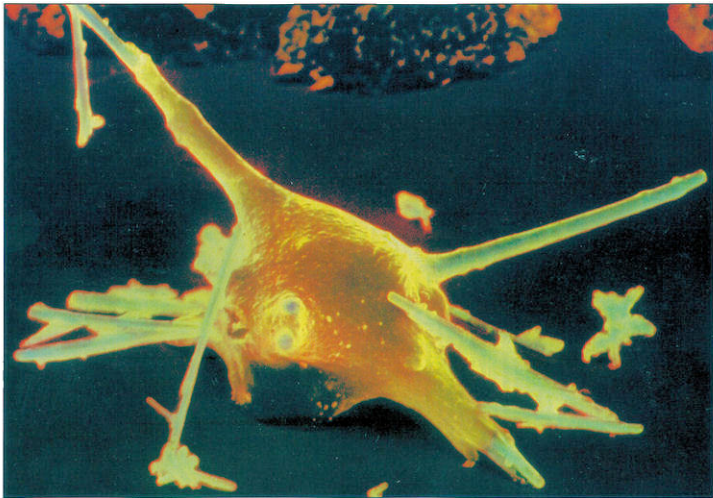


"THE WARS WITHIN"



A "skewered" macrophage. . . The first line of defense of your bodies immune system. . . Environmental pollutants like silica (fiberglass) and asbestos overwhelm them. All respirable non-degradable fibers are a health hazard.

Photo courtesy of Lennart Nilsson/Book Light Co. (Seattle, Wash.) (Over release)